

Bariatrics Unlimited



888-761-1999
F: 888-761-2066

PO Box 925 Taylorsville, KY 40071

www.bariatricsunlimited.com

The following is an information guide for our product lines. Note that they reflect retail cost in order to demonstrate the value we offer and should **not** be used as a guide for pricing your products. At Bariatrics Unlimited, we never charge retail price.

If you need a price quote, or would like a current price list to accompany this information guide, please contact us and we'll have one on its way to you right away.



PRODUCT DESCRIPTION

The 283 Series offers a professional quality look at an affordable price. It comes with a 5-year manufacturers warranty against defects and offers a sturdy design with sophisticated lines.

FEATURES

Weight Capacity: 1,000lbs

Chair Weight: 70lbs

Ships Via: Freight Line

OPTIONS & ACCESSORIES

Cal133

Dimensions

Overall Width: 28", 34", 44"

Overall Depth: 31"

Overall Height: 38"

Seat Width: 24", 30", 40" (between arms)

Seat Depth: 22.5"

Arm Height: 25.5"

Seat Height: 20"

RETAIL PRICE: \$1,056.00

Avg Lead-Time: 3-5 weeks

Fabrics & Finishes: Page five





PRODUCT DESCRIPTION

The 327 Series offers a professional quality look at an affordable price. It comes with a 5-year manufacturers warranty against defects and offers a sturdy design with sophisticated lines.

FEATURES

PCB-327-24

Weight Cap: 1,000lbs

Chair Weight: 60lbs

Ships Via: Freight Line

Overall Width: 28"

Overall Depth: 31"

Overall Height: 38"

Seat Width: 24"

Seat Depth: 22.5"

Arm Height: 25.5"

Seat Height: 20"

Add Cal133

PCB-327-30

Weight Cap: 1,000lbs

Chair Weight: 65lbs

Ships Via: Freight Line

Overall Width: 34"

Overall Depth: 31"

Overall Height: 38"

Seat Width: 30"

Seat Depth: 22.5"

Arm Height: 25.5"

Seat Height: 20"

Add Cal133

PCB-327-40

Weight Cap: 1,000lbs

Chair Weight: 75lbs

Ships Via: Freight Line

Overall Width: 44"

Overall Depth: 31"

Overall Height: 38"

Seat Width: 40"

Seat Depth: 22.5"

Arm Height: 25.5"

Seat Height: 20"

Add Cal133

RETAIL PRICE: \$1,106.00

Avg Lead-Time: 3-5 weeks

Fabrics & Finishes: Page five



The 8000 offers a professional quality look at an affordable price. It comes with a 5-year manufacturers warranty against defects and offers a sturdy design with sophisticated lines.

FEATURES

Weight Capacity: 750lbs

Chair Weight: 50lbs

Ships Via: Freight Line

OPTIONS & ACCESSORIES

Cal133

Dimensions

Overall Width: 29"

Overall Depth: 28"

Overall Height: 40"

Seat Width: 25" (between arms)

RETAIL PRICE: \$1,156.00

Avg Lead-Time: 3-5 weeks

Fabrics & Finishes: Page five



The 900 offers a professional quality look at an affordable price. It comes with a 5-year manufacturers warranty against defects and offers a sturdy design with sophisticated lines.

FEATURES

Weight Capacity: 750lbs

Chair Weight: 50lbs

Ships Via: Freight Line

OPTIONS & ACCESSORIES

Cal133

Dimensions

Overall Width: 29"

Overall Depth: 28"

Overall Height: 40"

Seat Width: 25" (between arms)

RETAIL PRICE: \$656.00

Avg Lead-Time: 3-5 weeks

Fabrics & Finishes: Page five

Swatches for Chairs 1-4

These are stocked fabrics only. We work with all major mills and can fulfill most fabric requests.

COLOR SWATCHES					
					
COLOR NAME: RED ROCK	COLOR NAME: CORDOVAN	COLOR NAME: FERN	COLOR NAME: NUGGET	COLOR NAME: NUTMEG	COLOR NAME: MUDSLIDE
					
COLOR NAME: PUMPKIN	COLOR NAME: GREYSTONE	COLOR NAME: CARBON	COLOR NAME: NIGHTFALL		

*Please note: Actual colors may vary from those on-screen.

COLOR SWATCHES					
					
COLOR NAME: SUNSET	COLOR NAME: INDIAN SUMMER	COLOR NAME: BOMBAY BLUE	COLOR NAME: BALLPOINT	COLOR NAME: CARIBBEAN	COLOR NAME: GRASSHOPPER
					
COLOR NAME: CLOVER	COLOR NAME: COCOA	COLOR NAME: CORNSILK	COLOR NAME: ALCHEMY	COLOR NAME: CLEMENTINE	COLOR NAME: CITYSCAPE
					
COLOR NAME: IRISH LINEN	COLOR NAME: FLAX	COLOR NAME: MUSHROOM	COLOR NAME: PUNCH	COLOR NAME: BLACKCURRANT	

*Please note: Actual colors may vary from those on-screen.

LAMINATES



5

MAHOGANY

WILD CHERRY

WALNUT

MED. OAK

LIGHT OAK



PRODUCT DESCRIPTION

This Chair is an attractive option for any office. Available with or without arms, it is suited to any use such as waiting room, guest chair, lobby, and more!

FEATURES

500 lbs capacity

Constructed with round heavy gauge 1-1/8" diameter tubular steel frame

Durable black powder coating.

Available armless or with urethane padded arms.

Configured with durable, high-density foam for a comfortable fit.

Does not stack.

Meets CAL 117.

OPTIONS & ACCESSORIES

Cal133

Non-Marring glides.

Ganging Plates.

Dimensions

Seat Width: 28"

Seat Depth: 22.25"

Back Height: 15"

RETAIL PRICE: \$709.00

Avg Lead-Time: 2-3 weeks

Fabrics & Finishes: Page eight



PRODUCT DESCRIPTION

This chair is an attractive option for any office. Available with or without arms, it is suited to any use such as waiting room, guest chair, lobby, and more!

FEATURES

500 lbs capacity

Constructed with round heavy gauge 1-1/8" diameter tubular steel frame

Durable black powder coating.

Available armless or with urethane padded arms.

Configured with durable, high-density foam for a comfortable fit.

Does not stack.

Meets CAL 117.

OPTIONS & ACCESSORIES

Cal133

Non-Marring Glides

Ganging Plates

Sled Base

Arms or Armless

Dimensions

Seat Width: 28"

Seat Depth: 20.25"

Back Height: 17"

RETAIL PRICE: \$871.00

Avg Lead-Time: 2-3 weeks

Fabrics & Finishes: Page eight



Vinyl Swatches for Pages: 6-7

These are stocked fabrics only. We work with all major mills and can fulfill most fabric requests.





PRODUCT DESCRIPTION

This chair is a great bariatric solution, complete with matching standard sized chairs!

FEATURES

700 lbs capacity

Matching Medium & Standard V versions

OPTIONS & ACCESSORIES

Cal133

Dimensions

Overall Height: 25.5"

Overall Width: 33"

Overall Depth: 35"

Seat: 27"W x 23"D x 3"T

Back: 17.5"W x 13.5"H x 2"T

RETAIL PRICE: \$848.00

Avg Lead-Time: 2-3 weeks

Vinyl (other fabrics also available)



AL821
Blue



AL856
Grey



AL832
Burgundy



AL802
Black



AL812
Seafoam Teal

Allante
Vinyl



PRODUCT DESCRIPTION

This chair is one tough utility chair! Suited to almost any environment, you'll find that its size and weight capacity fits many of your needs with style!

FEATURES

500 lb. weight capacity.
Natural finish American Oak frame and arms with catalyzed lacquer water protection.
Sturdy dowel and glue construction.
Navy Blue vinyl is stocking color.

OPTIONS & ACCESSORIES

Cal133

Dimensions

Overall Width: 30"
Overall Depth: 24"
Overall Height: 33"
Seat Width: 28"
Seat Depth: 19"
Seat Height: 19"

RETAIL PRICE: \$564.00

Avg Lead-Time: 1-2 weeks



PRODUCT DESCRIPTION

This low back chair can be used as a stand alone chair or a starter chair. As a starter chair you may add as many add-on chairs, connecting, or freestanding tables to create rows as you like.

FEATURES

- 800 lbs capacity
- Hard Maple Sides
- Bleach Resistant Clear Coat
- Heavy Gauge Steel Stretchers and J Bar
- Fire Retardant Ultracell Foam and Fiber Fillings
- Hardwood Seat and Bent Plywood Back
- Crumb Space

OPTIONS & ACCESSORIES

Cal133

Dimensions

- Seat Width: 28"
- Seat Depth: 20"
- Overall Width: 31.5"
- Overall depth: 25"
- Height: 33"
- Seat Height: 19"

RETAIL PRICE: \$1,591.00

Avg Lead-Time: 6-8 weeks

Fabric Samples: Page thirteen



RODUCT DESCRIPTION

This steel frame low back chair can be used as a stand alone chair or a starter chair. As a starter chair you may add as many add-on chairs, connecting, or freestanding tables to create rows as you like.

FEAT URES

- 800 lbs capacity
- Heavy gauge tubular steel frame
- Powder coated finish
- Hardwood seat
- Bent Plywood Back
- Fire Retardant Ultracell Polyfoam and fibers
- Upholstered arm caps
- Easier floor configuration changes

OPTIONS & ACCESSORIES

Cal133

With or Without Arms

Dimensions

Seat Width: 28"

Seat Depth: 20"

Overall Width: 32"

Overall depth: 24.5"

Height: 33"

Seat Height: 18"

RETAIL PRICE: \$1,368.00

Avg Lead-Time: 6-8 weeks

Fabric Samples: Page thirteen



Fabric Selections for Chairs 13, 14, 15

Note: These are stocked fabrics. Other fabrics are available as we work through all major mills.

FABRIC



Celestial



French Toast



Green Tea



Henna



Key Lime



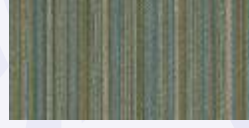
Mocha



Rutabaga



Saffron



Seaglass



Sesame Seed

Anti Microbial Vinyl



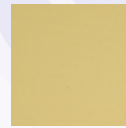
Cafe



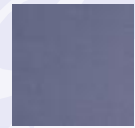
Chrome



Glacier



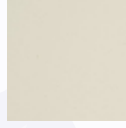
Honey



Jet Set



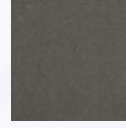
Key Lime



Mist



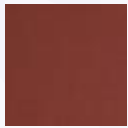
Nectarine



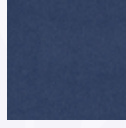
Polished Metal



Reflection



Ruby Slippers



Armada

Wood Finishes



Chestnut



English Oak



Natural Maple



Pear



Sand



Solar Oak



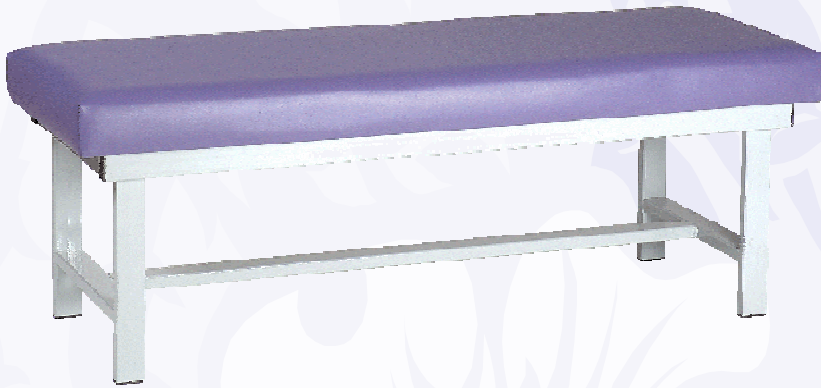
Walnut



Wild Cherry

PRODUCT DESCRIPTION

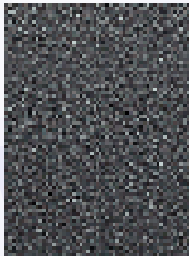
This stylish but extra strong 21" X 52" seating bench comfortably seats two and has a weight capacity of 1,000 lbs!



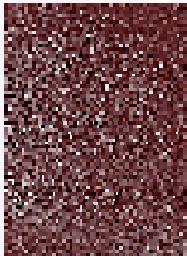
Frame Colors: Silver (standard) Black (upcharge), Cream (upcharge)
1,000 lbs capacity
Seat to Floor Height 21"
Overall Depth 21"
Overall Width 56"
Overall Height 21"

RETAIL PRICE: \$429.00
Avg Lead-Time: 2-3 weeks

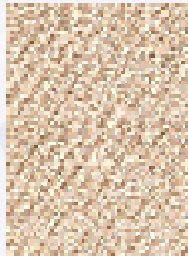
Vinyls (Other fabrics and frame finishes available)



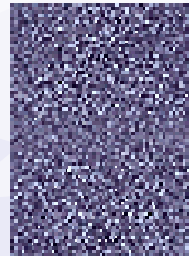
Black



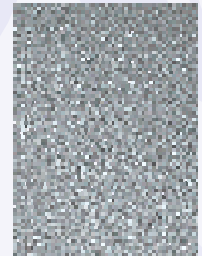
Burgundy



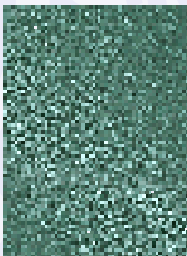
Canvas



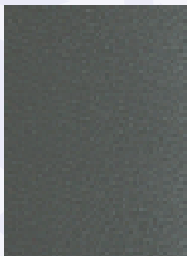
Crocus



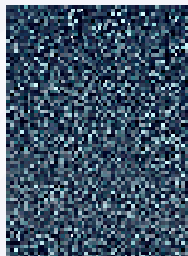
Dove



Dusty Jade



Gun Metal



Regimental Blue



PRODUCT DESCRIPTION

Stylish and affordable, our new line of ottoman's offer supreme functionality! They come with a 5-year manufacturers warranty against defects and offer a sturdy design with sophisticated lines.

PCB-OTT1

Weight Capacity: 1,000lbs
Chair Weight: 60lbs
Ships Via: Freight Line
Overall Width: 28"
Overall Depth: 22"
Overall Height: 20"
Add Cal133: \$15.00

PCB-OTT2

Weight Capacity: 1,000lbs
Chair Weight: 65lbs
Ships Via: Freight Line
Overall Width: 34"
Overall Depth: 22"
Overall Height: 20"
Add Cal133: \$20.00

PCB-OTT3

Weight Capacity: 1,000lbs
Chair Weight: 75lbs
Ships Via: Freight Line
Overall Width: 44"
Overall Depth: 22"
Overall Height: 20"
Add Cal133: \$25.00

RETAIL PRICE: \$698.00

Avg Lead-Time: 3-5 weeks

Fabric Cards: See Page Five



PRODUCT DESCRIPTION

The DG was designed for mental health applications but it's stylish good looks make it a perfect fit anywhere!

FEA TURES

- Separate seat and back
- Self-skinned perimeter arms
- Upholstered side panels can match or contrast seat/back
- Laminate or upholstered side panels on inside and outside
- Laminate side panels in any standard Arborite, Formica, Nevamar, Pionite or Wilsonart matte finish
- Heavy duty, steel inner frame is 25% recycled steel
- Back frame is FSC certified wood
- No openings, no protruding legs or hardware
- Tamper proof fastenings
- Helps achieve LEED credits
- Ships assembled as 1, 2 or 3 seaters

500lbs Capacity OPTIONS & ACCESSORIES

Specify arm finish, Black (B) or Taupe RAL 7006 (T)
Add up to 20 lbs of additional weight
Different fabric on seat and back at no upcharge
CAL 133 Foam is available

Dimensions
Seat Height: 18"
Seat Width: 30.25"
Overall Height: 32.75"
Depth: 29.75"
Width: 36.25"
Arm Height: 25.25"
Cubic Feet: 20
Weight : 80lbs

Frame Color



Black



Taupe

RETAIL PRICE: \$2,859.00

Avg Lead-Time: 3-5 weeks

Fabrics & Finishes: Last Page



PRODUCT DESCRIPTION

The 6101 chair can be used as a stand alone chair or a starter chair. As a starter chair you may add as many add-on chairs, connecting, or freestanding tables to create rows as you like.

FEA TURES

750 lbs capacity

Bariatric has a 30" seat width and is Dynamic Load tested to exceed 750lbs

Threaded replaceable glides are standard

Separate seat and back are standard for ease of maintenance

Velcro-removable back covers are standard

Available freestanding or connected and can be reconfigured in the field

Ships assembled as single seater

Warranty: 10-year Frame

Dimensions

Seat Height: 18"

Seat Width: 30"

Overall Height: 34"

Depth: 25"

Width: 34.25"

Arm Height: 25"

Cubic Feet: 28

Weight: 34lbs

Weight Limit: 750lbs



Flat Arm



Rounded Arm

RETAIL PRICE: \$1,235.00

Avg Lead-Time: 3-5 weeks

Fabrics & Finishes: Last Page



PRODUCT DESCRIPTION

The 6201 chair can be used as a stand alone chair or a starter chair. As a starter chair you may add as many add-on chairs, connecting, or freestanding tables to create rows as you like.

FEA TURES

750 lbs capacity

Bariatric has a 30" seat width and is Dynamic Load tested to exceed 750lbs

Threaded replaceable glides are standard

Separate seat and back are standard for ease of maintenance

Velcro-removable back covers are standard

Available freestanding or connected and can be reconfigured in the field

Ships assembled as single seater

Warranty: 10-year Frame

Dimensions

Seat Height: 18"

Seat Width: 30"

Overall Height: 34"

Depth: 25"

Width: 34.25"

Arm Height: 25"

Cubic Feet: 22

Weight: 34lbs

Weight Limit: 750lbs



Flat Arm



Rounded Arm

RETAIL PRICE: \$1,258.00

Avg Lead-Time: 3-5 weeks

Fabrics & Finishes: Last Page



PRODUCT DESCRIPTION

The 6301 chair can be used as a stand alone chair or a starter chair. As a starter chair you may add as many add-on chairs, connecting, or freestanding tables to create rows as you like.

FEA TURES

750 lbs capacity

Bariatric has a 30" seat width and is Dynamic Load tested to exceed 750lbs

Threaded replaceable glides are standard

Separate seat and back are standard for ease of maintenance

Velcro-removable back covers are standard

Available freestanding or connected and can be reconfigured in the field

Ships assembled as single seater

Warranty: 10-year Frame

Dimensions

Seat Height: 18"

Seat Width: 30"

Overall Height: 34"

Depth: 25"

Width: 34.25"

Arm Height: 25"

Cubic Feet: 22

Weight: 34lbs

Weight Limit: 750lbs

RETAIL PRICE: \$1,350.00

Avg Lead-Time: 3-5 weeks

Fabrics & Finishes: Last Page



PRODUCT DESCRIPTION

The 6401 chair can be used as a stand alone chair or a starter chair. As a starter chair you may add as many add-on chairs, connecting, or freestanding tables to create rows as you like.

FEA TURES

750 lbs capacity

Bariatric has a 30" seat width and is Dynamic Load tested to exceed 750lbs

Threaded replaceable glides are standard

Separate seat and back are standard for ease of maintenance

Velcro-removable back covers are standard

Available freestanding or connected and can be reconfigured in the field

Ships assembled as single seater

Warranty: 10-year Frame

Dimensions

Seat Height: 18"

Seat Width: 30"

Overall Height: 34"

Depth: 26.25"

Width: 34.25"

Arm Height: 26"

Cubic Feet: 20

Weight: 34lbs

Weight Limit: 750lbs



Flat Arm



Rounded Arm

RETAIL PRICE: \$1,270.00

Avg Lead-Time: 3-5 weeks

Fabrics & Finishes: Last Page



PRODUCT DESCRIPTION

The 6501 chair can be used as a stand alone chair or a starter chair. As a starter chair you may add as many add-on chairs, connecting, or freestanding tables to create rows as you like.

FEA TURES

750 lbs capacity

Bariatric has a 30" seat width and is Dynamic Load tested to exceed 750lbs

Threaded replaceable glides are standard

Separate seat and back are standard for ease of maintenance

Velcro-removable back covers are standard

Available freestanding or connected and can be reconfigured in the field

Ships assembled as single seater

Warranty: 10-year Frame

Dimensions

Seat Height: 18"

Seat Width: 30"

Overall Height: 34"

Depth: 26.25"

Width: 34.25"

Arm Height: 25"

Cubic Feet: 20

Weight: 34lbs

Weight Limit: 750lbs

RETAIL PRICE: \$1,317.00

Avg Lead-Time: 3-5 weeks

Fabrics & Finishes: Last Page



PRODUCT DESCRIPTION

The 6401 chair can be used as a stand alone chair or a starter chair. As a starter chair you may add as many add-on chairs, connecting, or freestanding tables to create rows as you like.

FEATURES

750 lbs capacity

Bariatric has a 30" seat width and is Dynamic Load tested to exceed 750lbs

Threaded replaceable glides are standard

Separate seat and back are standard for ease of maintenance

Velcro-removable back covers are standard

Available freestanding or connected and can be reconfigured in the field

Ships assembled as single seater

Warranty: 10-year Frame

Dimensions

Seat Height: 18"

Seat Width: 30"

Overall Height: 34"

Depth: 26.25"

Width: 34.25"

Arm Height: 26"

Cubic Feet: 20

Weight: 34lbs

Weight Limit: 750lbs

RETAIL PRICE: \$1,174.00

Avg Lead-Time: 3-5 weeks

Fabrics & Finishes: Last Page



PRODUCT DESCRIPTION

The 4201 chair can be used as a stand alone chair or a starter chair. As a starter chair you may add as many add-on chairs, connecting, or freestanding tables to create rows as you like.

FEATURES

750 lbs capacity
Bariatric has a 30" seat width and is Dynamic Load tested to exceed 750lbs
Threaded replaceable glides are standard
Separate seat and back are standard for ease of maintenance
Velcro-removable back covers are standard
Available freestanding or connected and can be reconfigured in the field
Ships assembled as single seater

Warranty: 10-year Frame

Dimensions

Seat Height: 18"
Seat Width: 30"
Overall Height: 32.5"
Depth: 27"
Width: 35"
Arm Height: 20"
Weight: 54lbs
Weight Limit: 750lbs



Black Poly Arm



Natural Maple Arm

RETAIL PRICE: \$1,218.00

Avg Lead-Time: 3-5 weeks

Fabrics & Finishes: Last Page



PRODUCT DESCRIPTION

The 3201 chair can be used as a stand alone chair or a starter chair. As a starter chair you may add as many add-on chairs, connecting, or freestanding tables to create rows as you like.

FEATURES

750 lbs capacity
Bariatric has a 30" seat width and is Dynamic Load tested to exceed 750lbs
Threaded replaceable glides are standard
Separate seat and back are standard for ease of maintenance
Velcro-removable back covers are standard
Available freestanding or connected and can be reconfigured in the field
Ships assembled as single seater

Warranty: 10-year Frame

Dimensions

Seat Height: 18"
Seat Width: 30"
Overall Height: 36" (46" High Back)
Depth: 26"
Width: 32"
Arm Height: 26"
Weight: 50lbs (60lbs High Back)
Weight Limit: 750lbs

RETAIL PRICE: \$1,118.00

Avg Lead-Time: 3-5 weeks

Fabrics & Finishes: Last Page



Black Poly Arm
Or
Natural Maple
(Pictured)



High Back



Headrest Cushion

Fabrics



Vinyl

