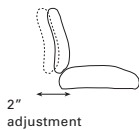
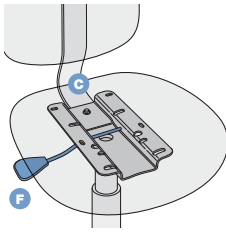
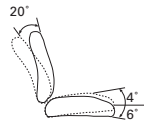
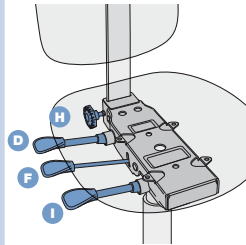


# CONTROL OPTIONS

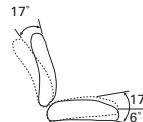
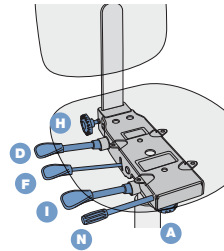
## CONTROL 01 Swivel task



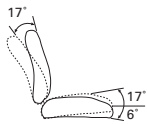
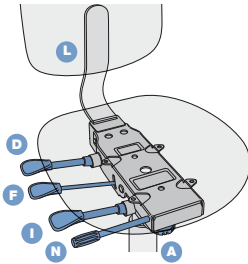
## CONTROL 03 Tri-Action



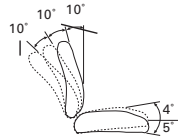
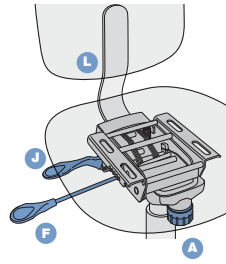
## CONTROL 04 Multi-function



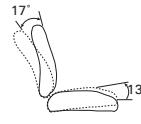
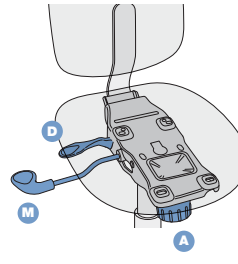
## CONTROL 05 Ratchet Back Multi-Function



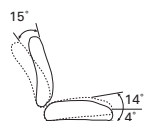
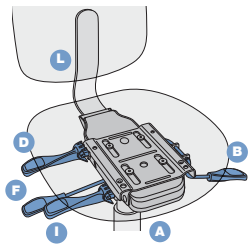
## CONTROL 06 Balance-Syncro



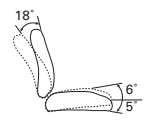
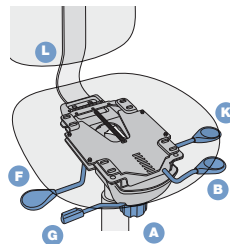
## CONTROL 07 Swivel Tilter



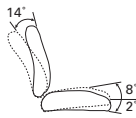
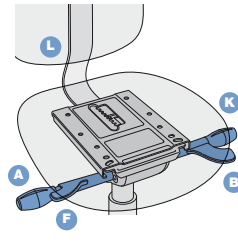
## CONTROL 08 Knee Tilt, Ratchet Back, Multi-Function w/built-in seat slider



## CONTROL 11 Deluxe Forward Pivot Syncro w/built-in seat slider



## CONTROL 14 Revo Forward Pivot Syncro w/built-in seat slider



## A Tension Knob

Turn clockwise to increase tension, turn counter-clockwise to decrease tension.

## B Seat Slider

While seated, pull lever, push seat to desired depth and release lever to lock. Locks in 5 positions over 2 1/2".

## C Rest Position Adjustment

Loosen hand wheel (do not remove), and slide back to desired position, then re-tighten hand wheel.

## D Back Angle Adjustment

While seated, pull paddle up, when desired angle found push paddle down to lock. Back Free floats in the paddle up position.

## F Pneumatic Height Adjustment

To lower, lift paddle while seated. To raise, lift paddle with your weight off seat.

## G Forward Tilt

Lean back in chair and roll or pull lever forward for forward tilt, push or roll lever backward for straight position during rocking. Attention: lever can only be moved when in a rear rocking position.

## H Back Height Adjustment

Turn knob counter-clockwise to loosen, lift or lower chair back to desired position and re-tighten. Critical lumbar curve positioning.

# CONTROL OPTIONS

## I Infinite Seat Angle Adjust with 6 Degree Forward Tilt

To change seat angle, pull paddle up while seated, push paddle down to lock when desired angle is achieved. Seat can rock.

## J Infinite Seat Angle & Back Angle Adjustment

To change seat and back angle, pull paddle up while seated, push paddle down to lock in desired locations, seat and back free float/rock.

## K Infinite Position Tilt Lock

To lock chair in position, push paddle down. To allow free rocking movement, pull paddle up.

## L Ratchet Back Height Adjustment

Simply lift back to desired position and back locks automatically. To release and reset back position, lift back completely to bottom stop and then move up to the new position.

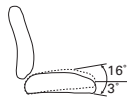
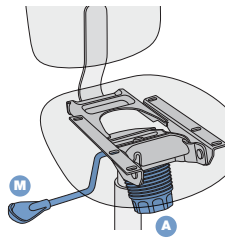
## M Pneumatic Height Adjustment/Tilt Rock Lock

Adjust to raise or lower seat (See F). The lever pushes in towards control to lock in the neutral position. Pull lever out to rock free.

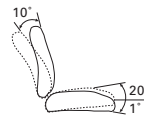
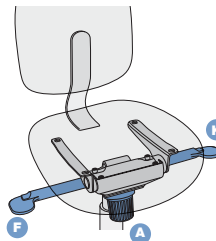
## N Infinite Tilt/Lock Screw

Turn screw paddle to adjust seat tilt. Screw paddle system eliminates tilt slippage.

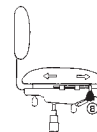
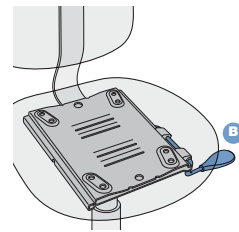
### CONTROL 15 Knee Tilting Conference Control



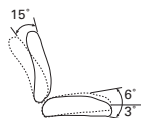
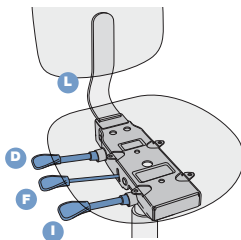
### CONTROL 20 Knee Tilting Conference Control



### 33 Seat Slider



### CONTROL 33 Ratchet Back Tri-Action



### CONTROL 50 Ratchet Back Heavy Duty Multi-Function

